

TEXAS COMMISSION ON ENVIRONMENTAL QUALITY



NOTICE OF DISTRICT PETITION

TCEQ Internal Control No. 03222010-D03

PETITION. Lavon Water Supply Corporation (Petitioner) has filed a petition with the Texas Commission on Environmental Quality (TCEQ) to convert Lavon Water Supply Corporation to Lavon Special Utility District (District) and transfer Certificate of Convenience and Necessity (CCN) No. 10066 from Lavon Water Supply Corporation to Lavon Special Utility District.

The nature and purpose of the petition are for the conversion of Lavon Water Supply Corporation and the organization, creation and establishment of Lavon Special Utility District under the provisions of Article XVI, Section 59, Texas Constitution, and Chapter 65 of the Texas Water Code, as amended.

The proposed District is located in Collin and Rockwall Counties and will contain approximately 13,714 acres. The territory to be included within the proposed District includes all of the singularly certified service area covered by CCN No. 10066 and is set forth in the following boundary description designated as Exhibit "A" hereto.

CCN No. 10066 will be transferred after a positive confirmation election.

CONTESTED CASE HEARING. The TCEQ may grant a contested case hearing on this petition if a written hearing request is filed within 30 days after the newspaper publication of this notice.

To request a contested case hearing, you must submit the following: (1) your name (or for a group or association, an official representative), mailing address, daytime phone number, and fax number, if any; (2) the name of the petitioner and the TCEQ Internal Control Number; (3) the statement "I/we request a contested case hearing"; (4) a brief description of how you would be affected by the petition in a way not common to the general public; and (5) the location of your property relative to the proposed district's boundaries.

The Executive Director may approve the petition unless a written request for a contested case hearing is filed within 30 days after the newspaper publication of this notice. If a hearing request is filed, the Executive Director may not approve the petition and will forward the petition and hearing request to the TCEQ Commissioners for their consideration at a scheduled Commission meeting.

INFORMATION. Written hearing requests should be submitted to the Office of the Chief Clerk, MC 105, TCEQ, P.O. Box 13087, Austin, TX 78711-3087. For information concerning the hearing process, please contact the Public Interest Counsel, MC 103, at the same address.

Issued: May 17, 2010

Exhibit "A"

CCN BOUNDARY NO. 10066 LAVON WATER SUPPLY CORPORATION COLLIN COUNTY AND ROCKWALL COUNTY, TEXAS

All that certain lot, tract or parcel of land situated in Collin County and Rockwall County, Texas, and being in the area of the town of Lavon, Collin County, Texas, and being more particularly described as follows:

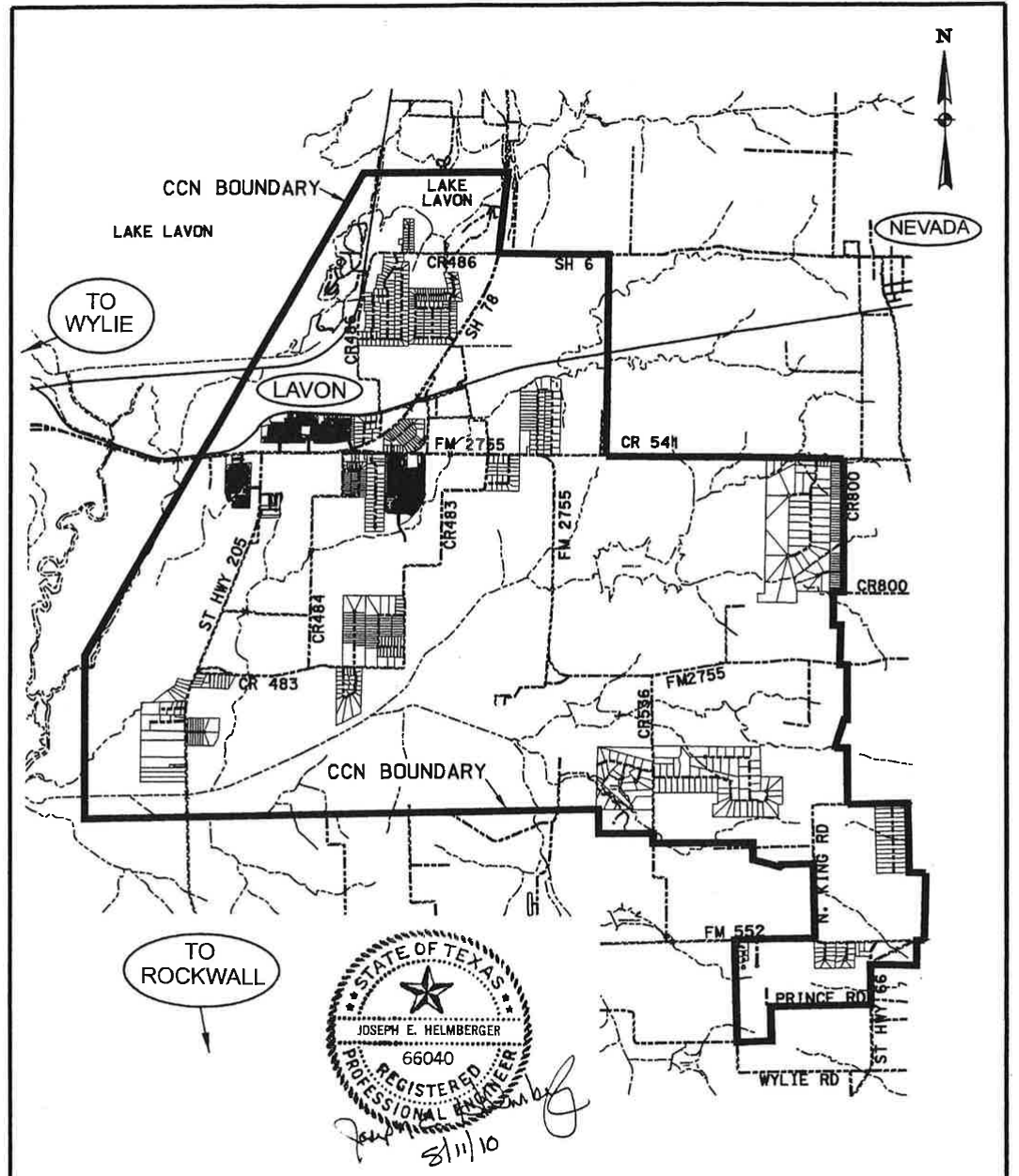
- BEGINNING at a point for corner at the intersection of State Highway No. 78 with F.M. Highway No. 6, State Plain Coordinates being N - 7068834.3, E - 2604305.0;
THENCE S. 88 deg. 47 min. 18 sec. E. with F.M. Highway No. 6 a distance of approximately 4429.02 feet to a point for corner;
THENCE S. 00 deg. 54 min. 25 sec. W. a distance of approximately 8047.28 feet to a point for corner within County Road 541, State Plain Coordinates being N - 7060694.4, E - 2608605.7;
THENCE S. 89 deg. 05 min. 33 sec. E. with County Road No. 541 a distance of approximately 9510.59 feet to a point for corner at the intersection of County Road No. 541 with County Road No. 800;
THENCE S. 00 deg. 09 min. 08 sec. E. with County Road No. 800 a distance of approximately 5286.00 feet to a point for corner;
THENCE S. 89 deg. 50 min. 52 sec. W. a distance of approximately 540.00 feet to a point for corner;
THENCE S. 00 deg. 09 min. 08 sec. E. a distance of approximately 1316.00 feet to a point for corner;
THENCE N. 89 deg. 50 min 52 sec. E. a distance of approximately 296.00 feet to a point for corner;
THENCE S. 00 deg. 08 min. 27 sec. W. a distance of approximately 1595.41 feet to a point for corner at F.M. Highway No. 2755;
THENCE N. 89 deg. 50 min. 52 sec. E. with F.M. Highway No. 2755 a distance of approximately 280.00 feet to a point for corner;
THENCE S. 00 deg. 09 min. 08 sec. E. a distance of approximately 2181.00 feet to a point for corner;
THENCE S. 89 deg. 50 min. 52 sec. W. a distance of approximately 113.00 feet to a point for corner;
THENCE S. 18 deg. 00 min. 00 sec. W. a distance of approximately 1186.00 feet to a point for corner;
THENCE N. 89 deg. 50 min. 52 sec. E. a distance of approximately 482.49 feet to a point for corner;
THENCE S. 00 deg. 09 min. 08 sec. E. a distance of approximately 2279.36 feet to a point for corner within County Road No. 979, said point also being on the County Line between Collin County and Rockwall County;
THENCE N. 89 deg. 14 min. 04 sec. E. with the County Line and along County Road No. 979, a distance of approximately 2456.11 feet to a point for corner;

- THENCE S. 00 deg. 00 min. 03 sec. W. a distance of approximately 2718.41 feet to a point for corner;
THENCE S. 88 deg. 53 min. 50 sec. E. a distance of approximately 608.34 feet to a point for corner, State Plain Coordinates being N - 7044062.2, E - 2621215.8;
THENCE S. 01 deg. 06 min. 10 sec. W. a distance of approximately 2745.79 feet to a point for corner at State Highway No. 66;
THENCE N. 89 deg. 53 min. 49 sec. W. a distance of approximately 291.32 feet to a point for corner;
THENCE S. 01 deg. 06 min. 11 sec. W. a distance of approximately 957.46 feet to a point for corner;
THENCE N. 88 deg. 53 min. 49 sec. W. a distance of approximately 1754.13 feet to a point for corner at State Highway No. 66, State Plain Coordinates being N - 7040399.0, E - 2619099.5;
THENCE S. 01 deg. 06 min. 12 sec. W. along State Highway No. 66 a distance of approximately 1600.55 feet to a point for corner at the intersection of State highway No. 66 and Prince Road;
THENCE S. 88 deg. 54 min. 25 sec. W. with Prince Road, a distance of approximately 3981.16 feet to a point for corner;
THENCE S. 01 deg. 05 min. 35 sec. E. a distance of approximately 1378.55 feet to a point for corner;
THENCE S. 88 deg. 54 min. 26 sec. W. a distance of approximately 1299.77 feet to a point for corner, State Plain Coordinates being N - 7037319.7, E - 2613815.0;
THENCE N. 01 deg. 05 min. 35 sec. W. a distance of approximately 4002.84 feet to a point for corner within F.M. Highway No. 552;
THENCE N. 88 deg. 54 min. 24 sec. E. along F.M. Highway No. 552, a distance of approximately 3117.61 feet to a point for corner at the intersection of F.M. Highway No. 552 and N. King Road;
THENCE N. 01 deg. 05 min. 37 sec. W. along N. King Road, a distance of approximately 3040.60 feet to a point for corner, State Plain Coordinates being N - 7044421.3, E - 2616797.6;
THENCE S. 88 deg. 54 min. 23 sec. W. a distance of approximately 1268.77 feet to a point for corner;
THENCE S. 01 deg. 05 min. 37 sec. E. a distance of approximately 119.12 feet to a point for corner;
THENCE N. 74 deg. 02 min. 35 sec. W. a distance of approximately 1143.36 feet to a point for corner;
THENCE N. 01 deg. 11 min. 33 sec. W. a distance of approximately 684.07 feet to a point for corner, State Plain Coordinates being N - 7045276.3, E - 2614417.8;
THENCE N. 89 deg. 59 min. 37 sec. W. a distance of approximately 3889.77 feet to a point for corner within N. Smith Road;
THENCE N. 00 deg. 00 min. 03 sec. E. along N. Smith Road a distance of approximately 384.70 feet to a point for corner;
THENCE N. 89 deg. 59 min. 57 sec. W. a distance of approximately 2225.60 feet to a point for corner, State Plain Coordinates being N - 7045661.0, E - 2608302.5;
THENCE N. 00 deg. 00 min. 03 sec. E. a distance of approximately 946.73 feet to a point for corner on the County Line between Collin County and Rockwall County;
THENCE S. 89 deg. 07 min. 04 sec. W. with the County Line between Collin County and Rockwall County a distance of approximately 20468.33 feet to a point for corner;
THENCE N. 00 deg. 00 min. 01 sec. E. a distance of approximately 6527.07 feet to a point for corner, State Plain Coordinates being N - 7052819.7, E - 2587836.6;
THENCE N. 29 deg. 59 min. 57 sec. E. a distance of approximately 22,233.59 feet to a point for corner, State Plain Coordinates being N - 7072074.7, E - 2598953.1;
THENCE N. 89 deg. 59 min. 53 sec. E. a distance of approximately 5711.50 feet to a point for corner within State Highway No. 78;
THENCE S. 06 deg. 19 min. 51 sec. W. along State Highway No. 78 a distance of approximately 3260.50 feet to the POINT OF BEGINNING and containing approximately 13,713.88 acres of land more or less.

NOTE: All State Plain Coordinates are based of off the North Central Zone, NAD83.
David W. Fite, R.P.L.S. No. 5837
Date: 5-10-2010



EXHIBIT "B"



Helping Make Life a Little Better

The Outpatient Therapy Department at Texas Health Rockwall offers a full range of rehabilitation programs: Physical, Occupational and Speech Therapies.



Jean Lao (left), Licensed Physical Therapist and Johnny Murray, Physical Therapy Technician

We help patients recover more quickly through a therapy program designed specifically for each patient. Our goal is to get patients back to their former lifestyle as soon as possible ... helping make life a little better!

Call today to schedule your appointment.

469-698-1100 Option 3



Texas Health
Presbyterian Hospital
ROCKWALL

Healing Hands. Caring Hearts.SM

www.phrtexas.com